

**Educational Opportunities
for Children & Families**

2022-2023 Annual Report

*Making a generational difference
in the lives of children, families,
and the SW Washington region.*
Pre-K | Childcare | Family Support



EOCF™

connect | empower | transform



Washington State Department of
CHILDREN, YOUTH & FAMILIES



Contents

- 1 Message from our CEO
- 2 Program Governance
- 3 Programs
- 4 Program Impact
- 5 Service Areas
- 6 Enrollment Qualifications
- 7 Family Support Services
- 8 Organizational Growth / Program Financials
- 9 With Appreciaton / Donate

Educational Opportunities for Children & Families (EOCF) is a 501(c)3 nonprofit, established in 1967 to provide for the success and well-being of children and families furthest from opportunity. From Prenatal support to Pre-K, EOCF reaches thousands of families annually, providing a stable pathway to success for the next generation of parents and community leaders.

About EOCF

Educational Opportunities for Children & Families (EOCF) is a leading provider of comprehensive early childhood education and family support programs in Southwest Washington.

The primary mission of the organization is to provide a pathway to success for children and families furthest from opportunity. Since 1967, EOCF has been a part of multi-generational change, helping families overcome poverty and educational hurdles.

Through programs like Head Start, Early Head Start, Early Childhood Education & Assistance Program (ECEAP), and Hot Shots Youth Sports, our communities are supported from birth to adulthood through holistic programs that make a cataclysmic impact.



Mission

To connect, empower, and transform the lives of children and families.



Vision

Leading a legacy of change.



Values

Honesty, Relationships, Commitment, Inclusion, and Safety

Message From The CEO



REKAH T. STRONG, MSW, CEO



EOCF Rising Kindergartner

Dear EOCF Community,

I am excited to present our 2022/2023 Program Year Annual Report, highlighting our accomplishments throughout Clark, Cowlitz, and Pacific Counties. As an organization in our 56th year of operation we remain committed to disrupting the cycle of poverty through offering multi-generational care and family support services through our high-quality early childhood education services.

Recognizing that our community is an early learning desert, stabilizing and supporting our staff is critical to our service delivery. With the program year startup in Fall of 2022, we implemented the results of a comprehensive review conducted in Spring of 2022. The reconfiguration of our service delivery models freed up \$1.2 million dollars to reorganize education team staffing structures and increase lowest paid staff wages to above local labor market levels. These new models allow for more daily staffing support in the classroom with more on-site supervision, mentoring, and professional growth opportunities. To address employee retention concerns, a comprehensive onboarding plan for education staff was implemented to build confidence and competency prior to assuming full responsibilities of their role in the classroom. With an increase in compensation and new growth opportunities, employee engagement and retention increased, decreasing our turnover rate from 42% in August 2022 to 2% in October 2023. In addition, we reintroduced Parent University, an innovative program designed to grow the early learning workforce, equipping parents and staff with the tools and qualifications necessary to become fully qualified Teachers' Assistants. We now have more than 24 employees that have graduated from the program!

Consistent with our vision of leading a legacy of change, equity sits at the center of our decision making as we continue to experience increases in the number of children and families from diverse cultural, racial, linguistic, and neurodiverse experiences and backgrounds. We continue to infuse inclusive and diverse training and practices to broaden our employees' understanding of Diversity Equity & Inclusion. Of our almost 300 employees, 39% are multilingual with a total of 20 different languages spoken, and 40% identify as BIPOC.

The data in this report speaks to our successes. Qualitatively, we repeatedly hear that when families join the EOCF community they feel supported with their children's educational journey, receiving individualized family resources that help build confidence and advocacy skills. Families recognize EOCF and its staff as catalysts for positive change, serving as our main source of recruitment and as our biggest advocates.

To our dedicated partners, stakeholders, families, staff, and generous donors, we extend our deepest gratitude for your commitment to our mission. Your support has allowed us to profoundly impact the lives of countless children and families, ensuring they can thrive and succeed. We invite you to celebrate our remarkable achievements with us. Together, we are making a difference, one child and one family at a time.

With appreciation,

A handwritten signature in blue ink, appearing to read "Rekah T. Strong".

Rekah T. Strong, MSW
Chief Executive Officer

Program Governance

EOCF is governed by two volunteer committees: the Board of Directors and the Parent Policy Council. Both vital to the success of the agency, these committees provide their representative expertise and insight to the Executive Management Team to further the prosperity of the organization. Separately from each other, the Board of Directors and Policy Council meet monthly to discuss the latest updates from the organization, evaluate monitored data, and assess program development.

Board of Directors

EOCF's Board of Directors is represented by local professionals and business leaders within Southwest Washington. This includes former program parents, attorneys, CFOs, CEOs, Medical and Mental Health professionals, and local Educators – even Head Start alumni.

- Board Chair*..... **Ken Torre**
Vice Chair..... **Jada Rupley**
Secretary-Treasurer **Rollin Perrigo**
Past Chair **Jake Van Dyke**
- Board Members:* **Jason Green** **Tony Cash**
 Mei Taylor **Denise Gideon**
 Gary Singleton **Bob Harding**
 Tabitha Presser **Pamela Loh Veljacic**



960 Hours

Volunteered by EOCF's
Board of Directors

1,088 Hours

Volunteered by EOCF's
Parent Policy Council

Parent Policy Council

Representative of the families EOCF serve, the Policy Council is comprised of parents or guardians from each site, along with a few community members.

- | | |
|---------------------------|--------------------------|
| Carolina Ambriz | Elvira Manelyuk |
| Maura Baker | Jeniver Miller |
| Debbie Blas | Alexus Oropeza |
| Miriam Chan-Martin | Angelica Palacios |
| Kaytlin Ditzler | Jenna Regla |
| Lucious Fuller | Holly Swenson |
| Stevonne Fuller | Rick Thomas |
| Kimberly Gusey | Leticia Vidales |
| Abolade (Bola) | |
| Majekobaje | |



PeaceHealth's Black Allies Network Group volunteers to set up new playground equipment with EOCF staff on MLK Jr holiday

Programs

Addressing the ongoing need for early learning in Southwest Washington for children furthest from opportunity, EOCF continues to provide services that affect the entire family unit through preschool, childcare, prenatal services, and more. The following are key programs the organization provides:

Head Start (HS)

Head Start is a comprehensive federally funded early learning program for children ages 3 to 5. The program promotes school readiness, health, mental health, and parent engagement. Services are provided in a center-based model in early learning classrooms or in the home environment through the Home-based program.

- Center-Based or Home-Based
- Full-Day Full-Year, Part-Day Part-Year, School-Day School-Year

Early Head Start (EHS)

Offering center-based or home-based models for pregnant women, infants, and toddlers Early Head Start provides education, resources, and support that promotes healthy development and outcomes.

- Center-Based or Home-Based



573

Head Start Students



138

Early Head Start Infants



549

ECEAP Students

Early Childhood Education & Assistance Program (ECEAP)

In partnership with the Department of Children, Youth, and Families (DCYF), this state funded pre-kindergarten program prepares children ages 3 to 5 for success in school and in life. ECEAP is a comprehensive early learning program focusing on health, social emotional development, nutrition, family services and support, and school readiness.

- Center-Based or Home-Based
- Full-Day Full-Year, Part-Day Part-Year, School-Day School-Year

HotShots Youth Sports

Expanding on the vital programming within early childhood education and positive generational influences, EOCF is a premiere partner of the local youth recreation program HotShots Youth Sports. Providing basketball programs for Clark County children grades 1-6, the program teaches the importance of teamwork, instruction, fair play, and sportsmanship, all the while offering youth a fun environment to learn.

Program Impact



K-12 Readiness

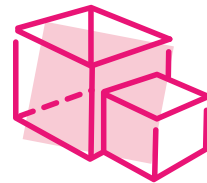
Preparing program students for kindergarten and beyond begins with aligning our learning goals with various partners and programs. These goals are based on the Head Start Early Learning Outcomes Framework, Washington State Early Learning & Development Guidelines, local school programs, and the individualized goals of the families we serve.

According to the National Head Start Association, school readiness encompasses more than just word or number recognition. Social-emotional, language, literacy, cognition, and motor-skills are developed through practice and example. To ensure each child's needs are met, our Teachers meet children where they are at, individualizing instruction and care to ensure every child has the opportunity to meet their full potential.

248 EOCF Program Families Surveyed Agree



Our program has had a positive impact
99% Positive Impact



Child's skills improved due to participation in EOCF
96% Skills Improvement



The EOCF experience will help their child be ready for public school
98% School Readiness



Staff involved them in setting goals for their child(ren)
97% Goal Setting



EOCF staff worked with them to ensure child had insurance and a current physical and dental exam
98% Health Coverage

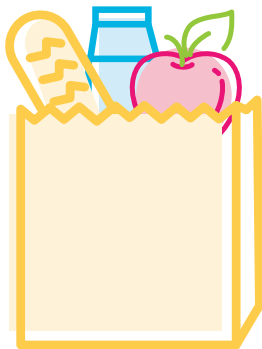
Service Areas



Nutrition

Each child at EOCF receives at least 1/3 to 1/2 of their daily nutritional needs, in balanced meals and snacks offered at their site.

Due to their attention to detail and consideration for all aspects of their work, EOCF's Nutrition component earned two awards from the Washington Office of Superintendent of Public Instruction (OSPI) for Excellence in Innovation and Excellence in Oversight.



625,000 | **3,900**
Meals Served | Meals per Day

Health & Wellbeing

EOCF's holistic approach prioritizes the health and safety of children and families furthest from opportunity. The organization helped administer over 6,000 health screenings average across all three program.



859
Physical Exams



753
Dental Exams

EOCF serves three counties in Southwest Washington, Clark, Cowlitz, and Pacific County. For flexibility, EOCF offers home-based programs to meet families where they are. Some of our classrooms are at partner sites and inside school district locations.



58 Classrooms



30 Locations

Enrollment

Qualifications

Access to these programs is free for families who qualify. Once applications are submitted, families are selected based upon risk factor criteria as well as income assessment. To properly identify families with the greatest need, the organization actively recruits families experiencing houselessness, receiving public assistance, children in foster care, children who qualify for an Individual Family Service Plan or Individual Education Plan, and those whose income is up to 200% of the federal poverty level.

Program Transitions

EOCF has comprehensive transition plans that support toddlers transitioning to preschool and then into the public schools' K-12 system. In the 2021-2022 Program Year, over 60 children transitioned from EHS into HS or ECEAP programs, further supporting the consistency of care required for success.

Family Demographics

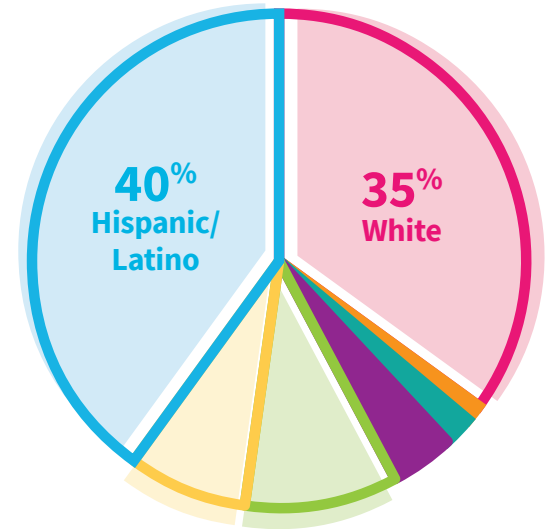
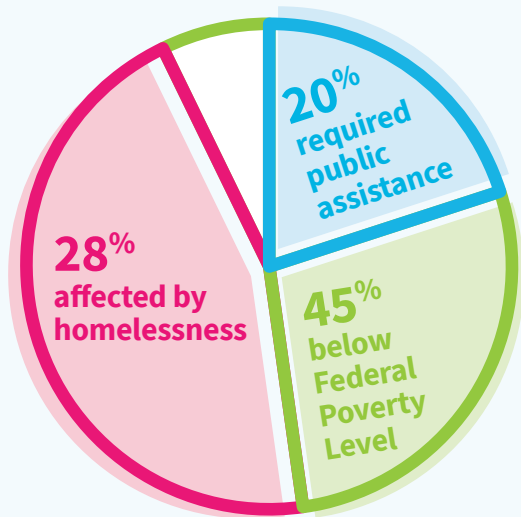
EOCF serves children and families with varying backgrounds, languages, cultures, races, and religions; striving to include all families in the process to reduce parity gaps through best practices. Staying committed to the cultural responsiveness that applies to their thought leadership, EOCF prioritizes the inclusion and recognition of unique differences and historical experiences.

Self-Identification

American Indian/Alaska Native	1%
Asian	2%
Pacific Islander	4%
African American	8%
Multi-Race	10%

Preferred Language

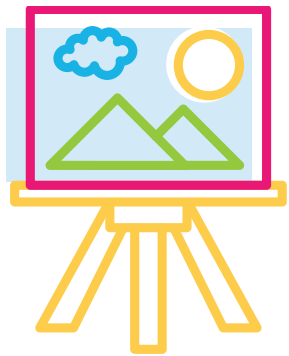
English	63%
Spanish	35%
Russian/Ukrainina/Additional	2%



Family Support Services



EOCF's program families are encouraged to engage in events that both support success in the classroom, and at home.



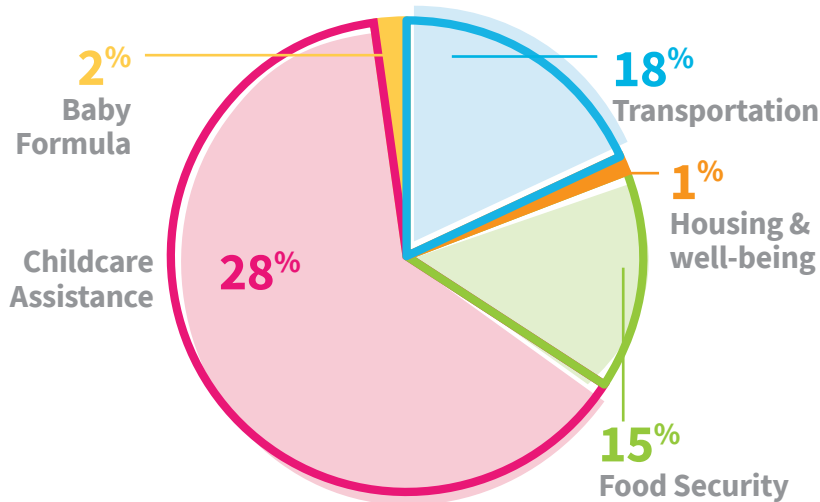
99

Family Events



Village Fund

As another arm of support, EOCF continues to utilize the "Village Fund," which is an unrestricted discretionary fund for the sole purpose of supporting a child's stability and active participation in our programs. **In 2022, EOCF distributed over \$12,526 to families in various categories supporting the greatest needs.** These are costs not allowable by our grants; this is a creative means to assist families with unexpected costs and to help remove barriers for consistent attendance in our programs.



Many of EOCF's program families qualify for assistance outside of what the organization offers. From food banks to housing assistance, below is an outline of how many resources were provided for each program:



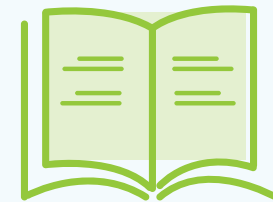
550

Resources to Head Start



252

Resources to Early Head Start



45

Resources to ECEAP

Organizational Growth

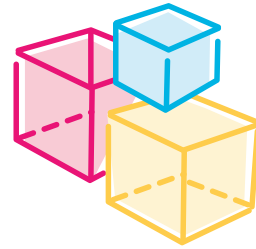
Parent University

Created to develop the local Early Learning workforce and provide opportunity to the agency's enrolled families, Parent University is a no-cost program that provides early childhood education to interested parents and current staff. With focus on curriculum creation and classroom management, Parent University students attend Clark College to earn 12 stackable credits in Early Childhood Education. More than 24 current staff have graduated from Parent University.

Classroom Curriculum

In addition to the social-emotional teachings within EOCF's early learning classrooms, staff-created curriculum was rolled out this year that aimed to better represent the demographics the organization serves. In the 2021-2022 Program Year, 5,150 multi-inclusive, age-appropriate books were distributed among EOCF's classrooms, giving children the opportunities to learn about various concepts.

- Social-Emotional Awareness
- Positive Self-Image
- Mental & Physical Diversity & Ability
- Migration & Immigrant History
- Global Stewardship
- Safety
- Appreciating Different Languages
- Racial & Cultural Diversity
- Career, Community, and Connections



12

Stackable Credits in
Early Childhood Education



24

Future Graduates &
Current EOCF Staff



5,150 Books

Program Financials

Fiscal Year Ending Oct. 31, 2022

REVENUE

Head Start Program	\$8,499,584
Early Head Start Program	\$1,529,028
USDA	\$380,588
Nonfederal - Other	\$451,441
Washington ECEAP	\$4,937,953
Wash State Child Care Subsidy	\$955,027
In-Kind	\$774,619

TOTAL Revenue & Support

\$17,528,240

EXPENDITURES

Personnel	\$8,841,502
Fringe Benefits	\$2,444,544
Travel	\$179,778
Equipment	\$224,389
Supplies/Goods and Services	\$1,178,461
Contract Services	\$1,863,363
Facility Constructions	\$181,356
Other	\$197,957
In-Kind	\$774,619

Total Operating Costs

\$15,885,969

NON-OPERATING EXPENSES

Fixed Assets	\$10,464
Depreciation	\$166,718

TOTAL Non-Operating Costs

\$177,182

TOTAL

Expenditures & Expenses

\$16,063,151

CHANGE IN NET ASSETS

\$1,465,087

With Appreciation

Recognized for their valuable impact on EOCF throughout the years, the following are supporters and donors that continue to support the progress of the organization.

AC Hotel Vancouver	Dave Scadden Paddlesports	Leavenworth Reindeer Farm	Roots Marketplace
ACE Hardware	Designs by Kiri	Lewis & Clark Bank	Round To It Art
Adidas	Dick Hannah Dealerships	Little Conego	RSV Building Solutions LLC
Adrift Hotel	DORCUS/St. John Lutheran Church	LSW Architects	Seattle Mariners
Aerial Industries Inc.	Dylan's Cottage Bakery	MacKay Sposito	SEH America Inc.
Aho Construction Inc.	Employers Overload	Marquam Auction Agency	Shakti Cove Cottages
Al Angelo Co	EOCF Board of Directors	Maryhill Winery	Shields Family Home Loans
Arthur Murray Dance Studio	ESDF	McFarlane's Bark	Skamania Lodge
Artistic Bliss Portraits	Evergreen Eye Care	Minuteman Press (Camas)	Southern Girl Delights
Association of Washington Business (AWB)	Exigy Consulting	Mutual of America	SR Suntour
Backwoods Brewing	Fairway Independent Mortgage	MyCovio's	Stack 571
Bargreen	Fire & Vine Hospitality	National Student Safety Program	State Farm - Jose Iniguez
Beaches Restaurant and Bar	Fish It All Guide Service	Nevermore Fine Jewelry	Stein Distributing
Bemis Co. Inc.	Fisher Investments	New Tradition Homes	Stem Floral Design
Bethany Vineyard & Winery	Friends of EOCF	Nike	TALented Works
Big Al's	Frito-Lay Inc.	No Fork	Tapani Inc.
Biggs Insurance/Alliant	Fuller Group	Not Too Shabby Boutique	Terra Nova Somatic Arts
Black Rock Coffee Bar	Gather & Feast Farms	Nutter Foundation	The Breakers
Black Walnut Inn & Vineyard	Gaynor's Automotive	NW Escape Experience	The Columbian
Bleu Door Bakery	GLAMbeauty Bar	NW Futures	The Depot Restaurant
Boards and Bubbles	Greater Vancouver Chamber	Oddfellows	The Historic Trust & Pearson Field Education Center
Boujee Vegan Girl	Green Rocks Lodge	Oregon Beach Vacations	The Standard
Cascade Dental	H.B. Fuller	Original Goat Yoga	The Vintages Trailer Resort
Castle Farms	Hewlett-Packard	Pacific Northwest Fundraising	Tito's Handmade Vodka
Chandelier Bakery	Homewood Suites	Pacific Perks	Topgolf Hillsboro-Portland
Chuck's Produce	Hookin' It Up Guide Service	Pacific Plumbing & Draining	Tri Mountain Golf Course
Clark College	Hotel Indigo	Packwood Lodge	Urban Float Vancouver
Colliers International	ilani	Pain Relief Partners	USI
Colonial Life	Indigenous Adventures	Parelius Insurance	Vancouver Public Schools
Columbia Bank	International Graphics & Nameplate, Inc.	Parkrose Hardware	Vista Balloon Adventure
Columbia Credit Union	iQ Credit Union	PeaceHealth Bang Group	Wacom Technology Corp.
Columbia Machine Inc	James E. John Construction Co.	Peak Measure	Wanderlust Tours
Cowlitz Tribal Foundation	Jim West - Commercial Wise	Playmakers	WSUV
Cowlitz Child Care & Development Program	Move Real Estate	PointNorth	Waste Connections
CREDC	Juxtaposition	Pomeroy Farms	We Plan It
Columbia Sportswear	K9 to 5	Portland Timbers	White Pass Ski Area
Corwin Beverage Co.	Kezar Creative, Inc.	Proactive Network Technology	Wildlife Safari
Covalent Architecture	Labor of Love Unique Clay	Pure Barre	Willamette Valley Vineyards
Craft Warehouse	Lakeshore Learning	Riff_Creative	Wood Pellet Products
Craig Stein Beverage	Leadership Clark County	Ripple Impact NW	Workforce SW WA
D&D Nursery Inc.	Learning Avenues	Riverside Payments	WorkSource
	Childcare Centers	Riverview Community Bank	Yordy Kropf Charitable Fund
		Rodan and Fields	Your Party & Event Center

Donate to EOCF

Go to EOCFWA.org/Donate to set up your one-time or monthly donations to provide for the organization's greatest needs. Or, make it easy on your accounting by 'rounding up' to the nearest dollar on all your purchases. That spare change goes directly to EOCF's ability to continue the programs and services that make a generational impact.

With any amount of support, you make a difference. Thank you.



“Color Their Worlds” with Opportunity

Annually, EOCF participates in fundraising events and opportunities that engage the community, including the Gala & Auction “Color Their Worlds.” With attendance by local partners to future stakeholders, this event celebrates the agency’s successes and provides insight into EOCF’s life-changing programs.

Partner with EOCF

Secure the future of the organization's impact by connecting with EOCF's Culture & Development team at Outreach@EOCFWA.org. Consider becoming a Champion for Children Donor, an Event Sponsor, or a go-to partner for field trips, giveaways, or community engagement.



EOCF™

Educational Opportunities for Children & Families

17800 SE Mill Plain Blvd. Ste 150
Vancouver, WA 98683
360.896.9912 • www.eocfwa.org



Connect

Read Stories

On EOCFWA.org, read about the families impacted by EOCF's programs and how their lives have changed for generations to come.

Get Social

Follow the organization on social media at

[@EOCFWA](https://www.instagram.com/eocfwa)

